

## 1.0 Example: Importing a More Complex SAT File

This example will import a CAD drawing of a Gazebo with a tree. This SAT file was provided by the architectural office of Richard Manke. The file was created using AutoCAD.

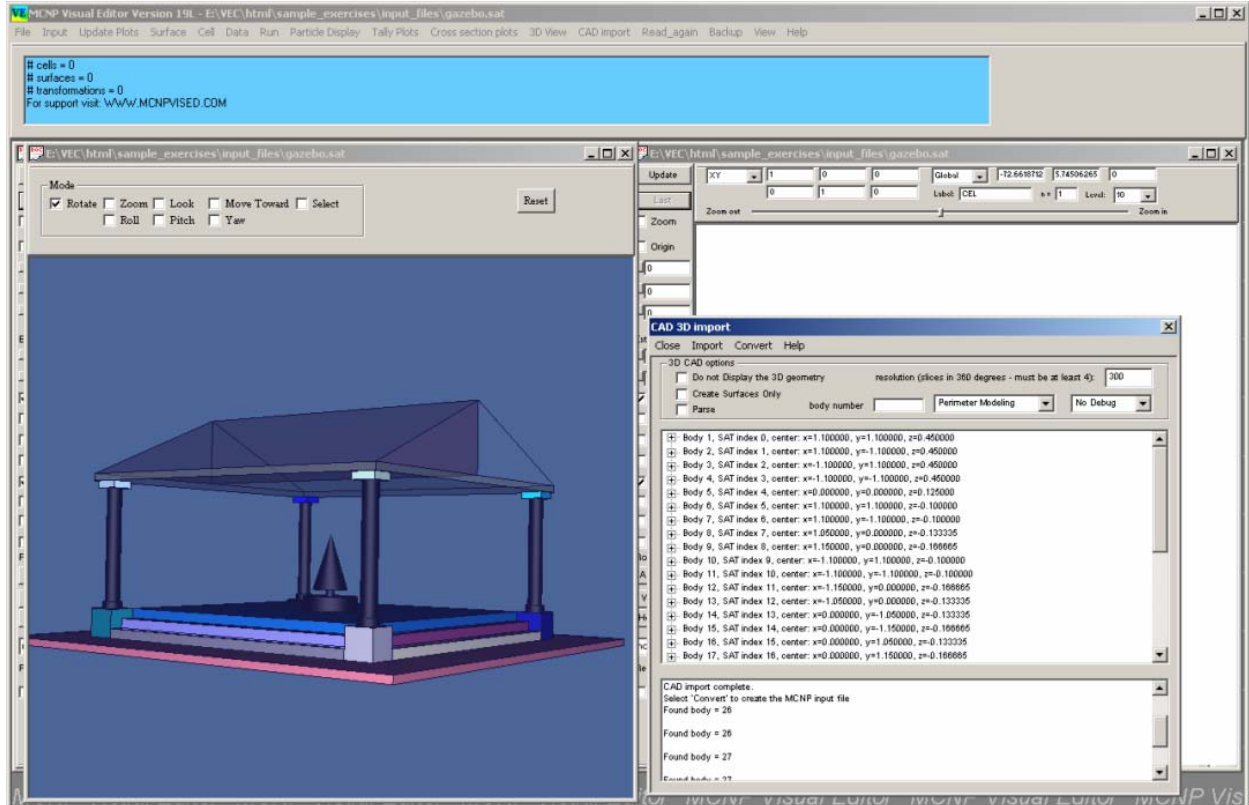


Figure 1-1 3D Image of imported CAD File of a Gazebo.

Start the Visual Editor.

Click on **CAD Import...3DImport**.

On the CAD 3D Import panel, **click Import**.

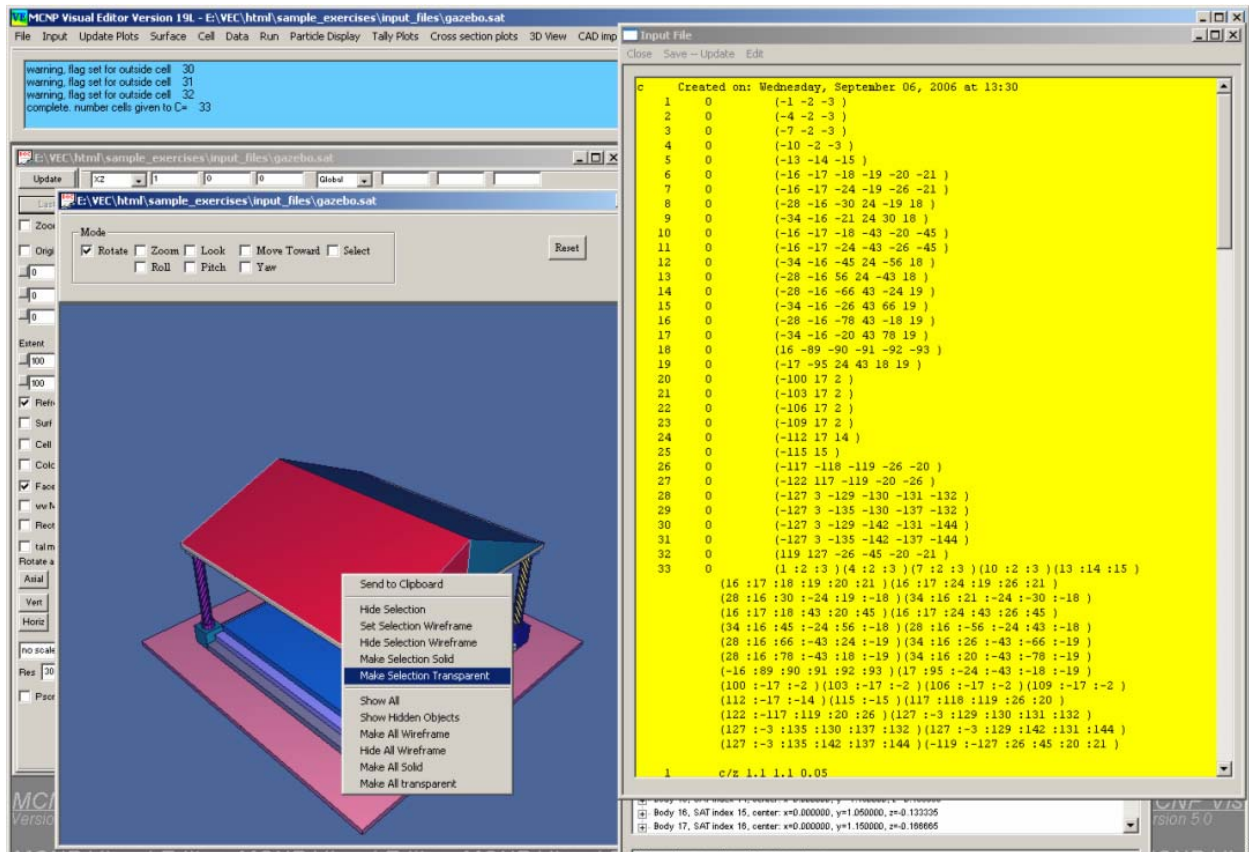
Select the **gazebo.sat** file and **click OK**.

On the CAD3D Import panel, **click Convert**.

On the Main Menu, click on **Input** and view the created input file.

On the 3D Display Panel, **Click** on the **Move Toward** checkbox.

Position the cursor on the 3D plot, **hold the left mouse button down and slide up**. This will zoom in. Continue sliding until the picture fills the window.



**Figure 1-2 Making a Surface Transparent.**

**Right Click on the Roof of the Gazebo and select Make Selection Transparent**