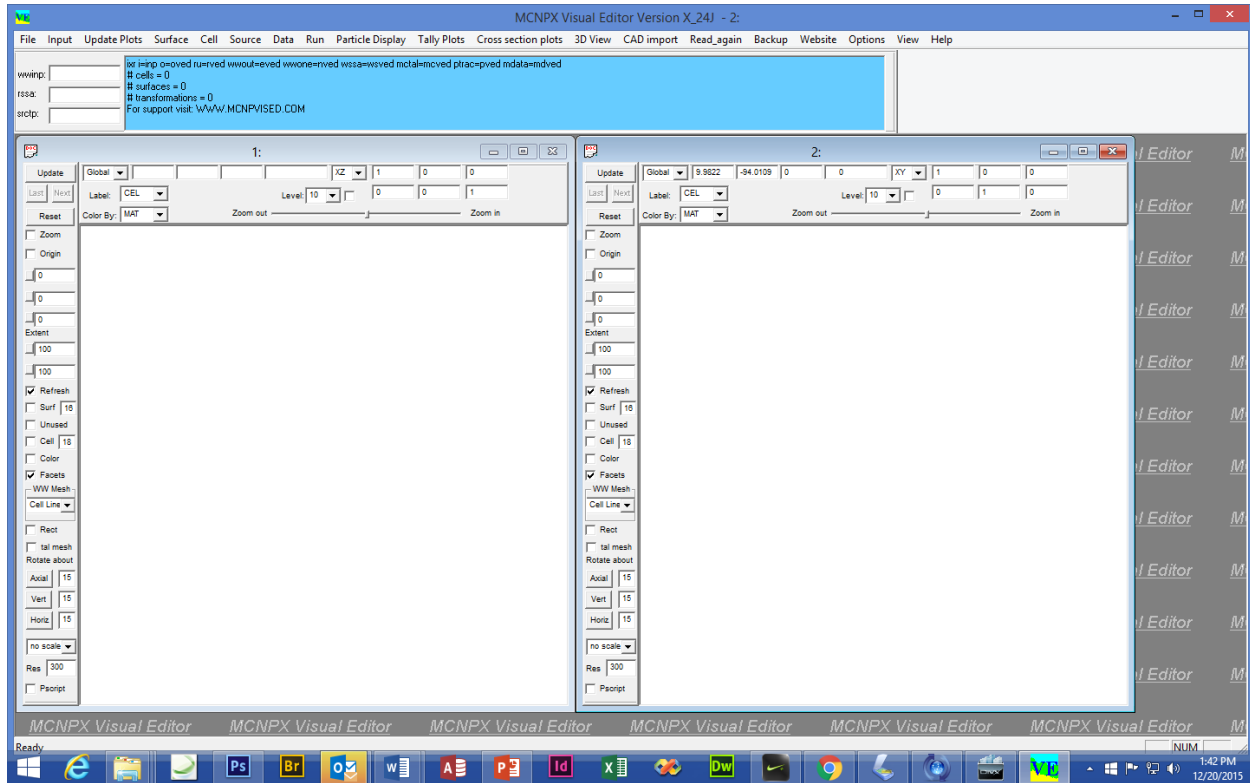


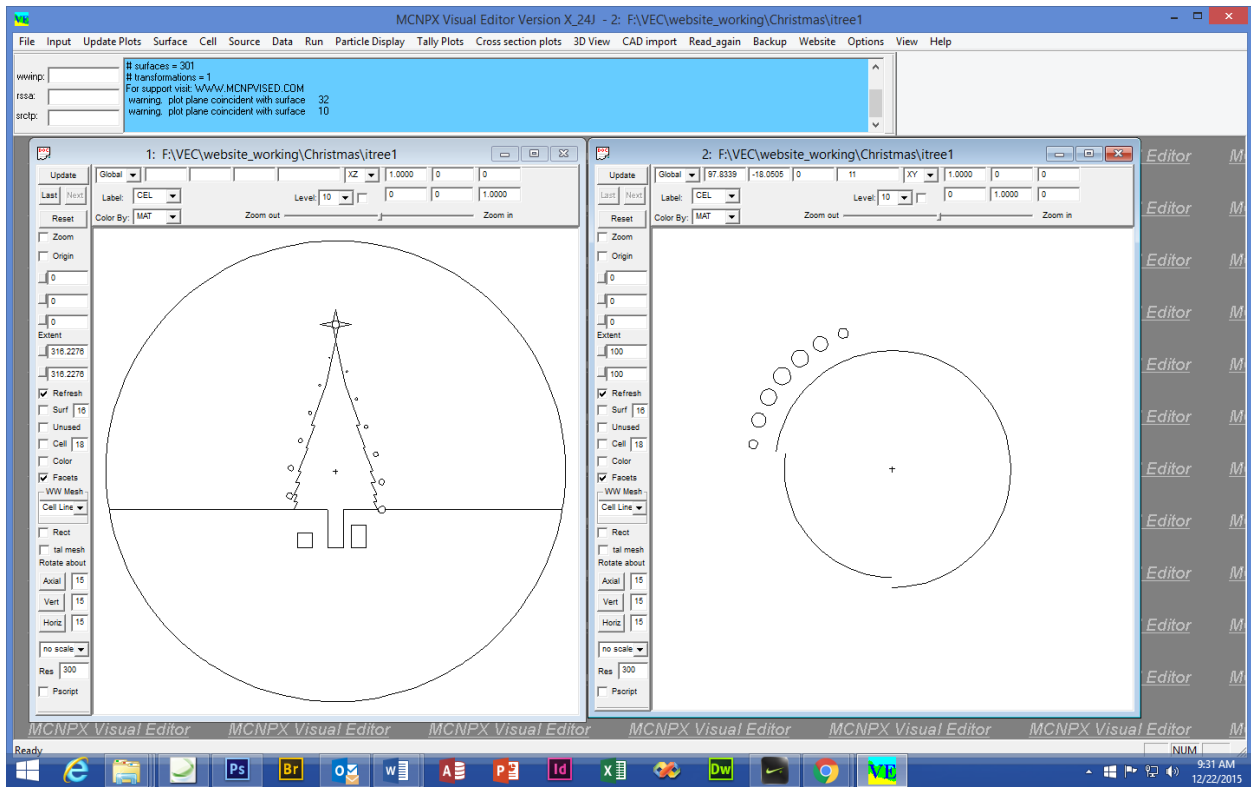
Instructions for Plotting the Christmas Tree

Open the Visual Editor.



Click **File...Open...** and browse to the tree input file.

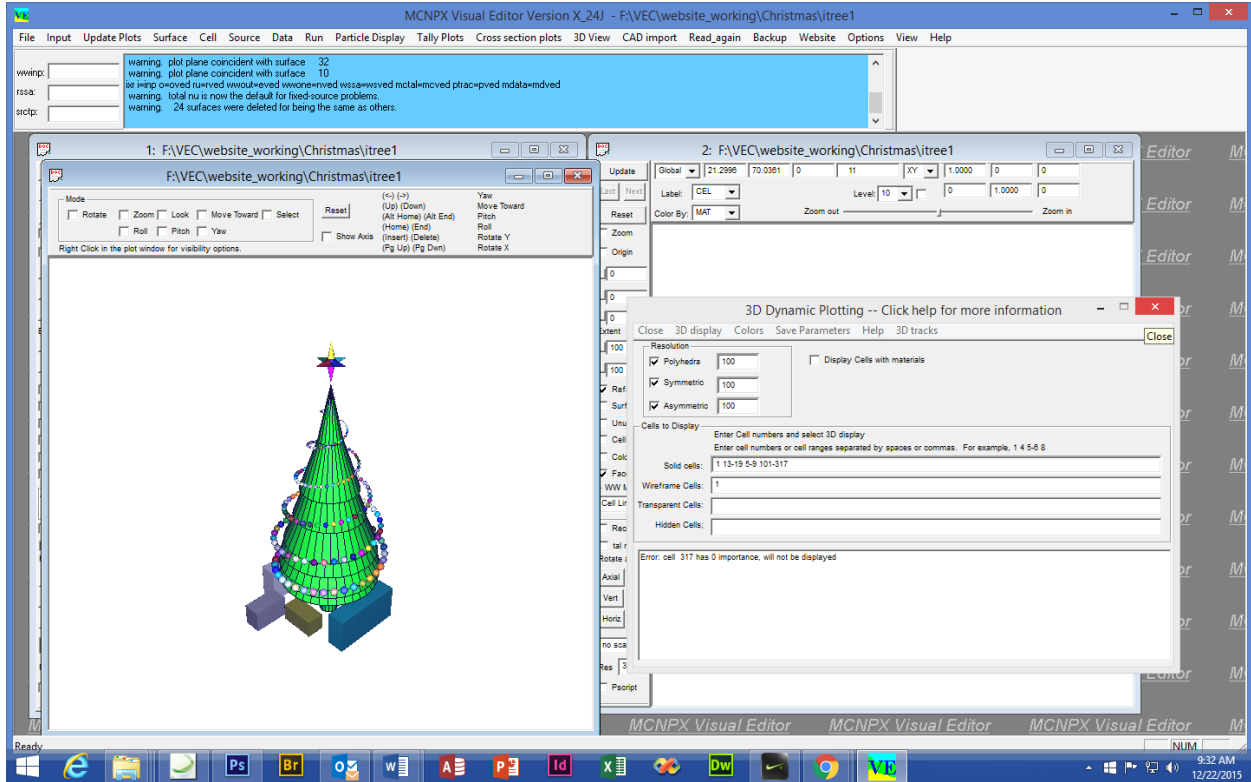
Click **Update Plots**

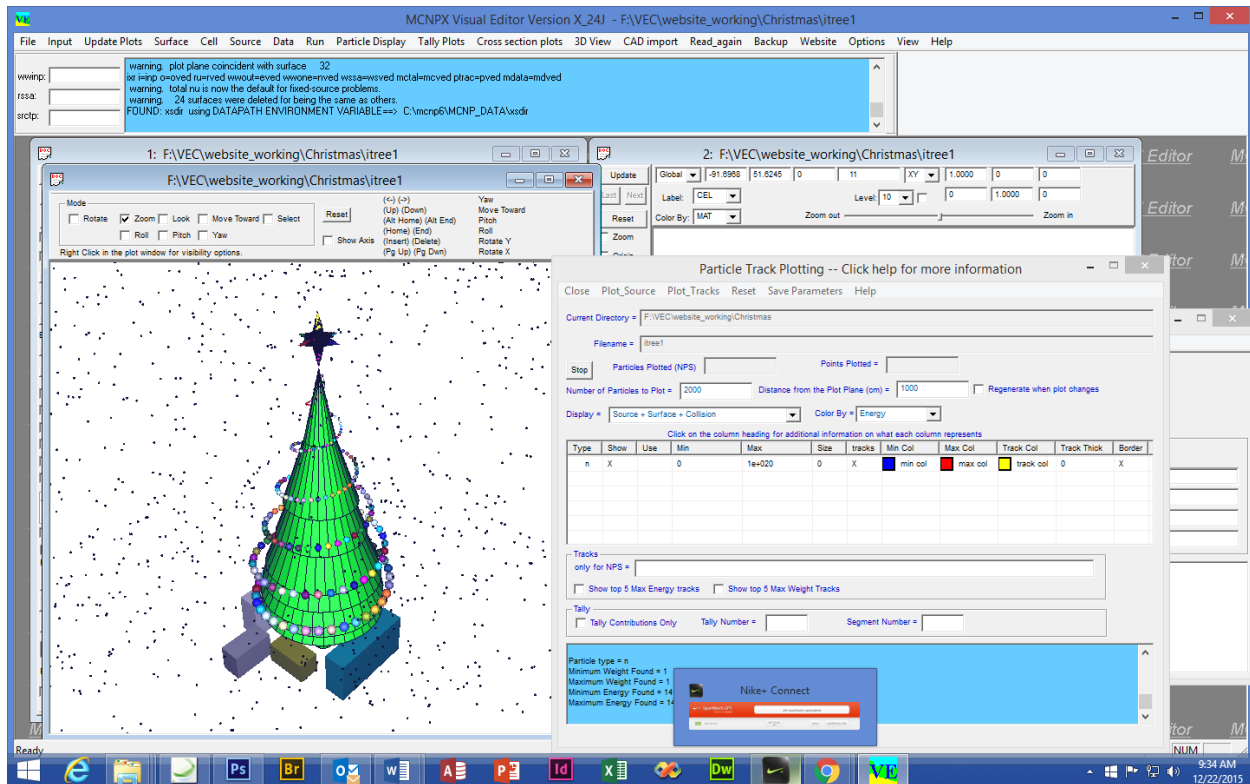


Click **3D View... 3D Dynamic Display**

In the Solid Cells box, type **1, 13-19, 5-9, 101-316**

In the Wireframe cells box, type **1**





Click on **Particle Display... Plot Particle Tracks**.

Change Number of Particles to Plot to **2000**

Change Distance from the Plot Plane **1000**

Change Display = **Source + Surface + Collision**

Click under Tracks to add an **X** in the Tracks column of the grid.

Click **Plot Tracks**

